

**June 1, 2022-
May 31, 2024**

**Colville Indian Reservation
Member Resident Fishing
Regulations**

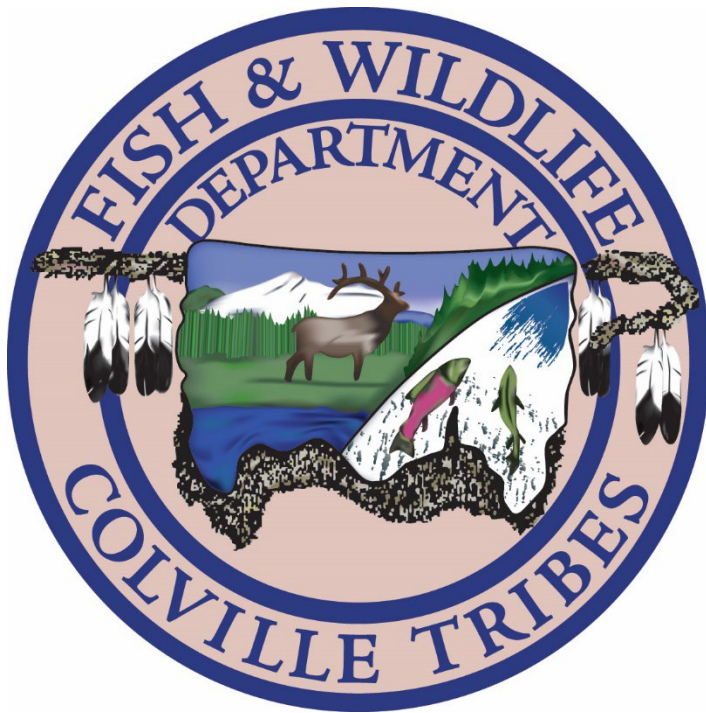


TABLE OF CONTENTS

PART I—INSTRUCTIONS ON HOW TO USE THIS BOOKLET 2

PART II—GENERAL REGULATIONS 3

PART III—NORTH HALF GENERAL LIMITS 7

PART IV—SPECIAL REGULATIONS 8

PART V—DEFINITIONS.....13

PART VI—MAPS AND DIAGRAMS.....16

Resolution No. 2022-316
Colville Tribal Member Fishing Regulations

Pursuant to the Colville Tribal Law and Order Code, the Colville Business Council of the Confederated Tribes of the Colville Reservation (CCT or Colville Tribes) hereby promulgates the following regulations governing the fishing of resident fish species by CCT Members on the Interior Waters of the Reservation, Boundary Waters, and North Half Waters. The Colville Business Council has determined that these regulations are in the best interest of preserving, protecting, and perpetuating the fishery resources on the Colville Reservation and the North Half.

The fishing regulations in this booklet apply only to fishing of resident species on the Interior Waters of the Reservation, Boundary Waters, and North Half Waters (as defined in Part V) by enrolled Members of CCT.

Salmon and Steelhead Fishing: Regulations governing salmon and steelhead fishing, which is authorized only on a ceremonial or subsistence basis except when otherwise permitted by the Director of the CCT Fish and Wildlife Department, are developed separately from resident fish regulations and provided as its own document(s).

PART I—INSTRUCTIONS ON HOW TO USE THIS BOOKLET

This booklet is designed to inform CCT Members of the applicable fishing regulations on Interior Waters of the Reservation, Boundary Waters, and North Half Waters (as defined in Part V). Please review the following table for instructions on how to use this booklet and how to determine the applicable CCT fishing regulations.

| | |
|---------------|--|
| STEP 1 | Review Part II of this booklet, which contains the General Regulations governing Member fishing on Interior Waters of the Reservation, Boundary Waters, and North Half Waters. |
| STEP 2 | If you are planning to fish on North Half Waters, review Part III of this booklet, which contains the General Limits for North Half Waters. |
| STEP 3 | Review the Special Regulations in Part IV of this booklet. These Special Regulations establish fishing limits and requirements that may be different from the General Regulations and General Limits for certain waters. Determine which special rules are applicable in the waters you plan to fish. |

| | |
|---------------|---|
| STEP 4 | Familiarize yourself with the definitions provided in Part V of this booklet to ensure that you are fishing in a manner consistent with the regulations. |
| STEP 5 | Go fishing! |

Any questions not answered in this booklet should be directed to:

Fish and Wildlife Department
 Colville Confederated Tribes
 P.O. Box 150
 Nespelem, WA 99155
 Phone: (509) 634-2110
 Office hours: Monday – Thursday 7:00 a.m. to 5:30 p.m.

For emergencies or to report suspicious activity call:

Colville Natural Resources Enforcement at (509)634-3145, or
 Colville Tribal Police at (509) 634-2472 or (800) 551-5800

PART II—GENERAL REGULATIONS

The following General Regulations apply to all CCT members who are fishing on Interior Waters of the Reservation, Boundary Waters, and North Half Waters (as defined in Part V). **NOTE:** Members are not subject to state licensing requirements while fishing on Interior Waters of the Reservation, Boundary Waters, or North Half Waters, but Members fishing on the shoreline of any Boundary Water opposite to the Reservation or North Half may be subject to Washington State fishing regulations.

1. Only enrolled CCT Members are authorized to fish pursuant to these regulations. All other persons wishing to fish on the Interior or Boundary Waters of the Colville Reservation should review CCT non-member fishing regulations to determine applicable requirements.
2. Any Member fishing pursuant to the regulations in this booklet must possess a valid CCT-issued tribal identification card while fishing. A valid CCT-issued tribal identification card shall constitute a legal permit to fish pursuant to the regulations in this booklet. Upon demand of a Colville Law Enforcement Officer, any Member who is fishing pursuant to these regulations shall produce their CCT-issued tribal identification card for inspection.

3. Members may fish on all Interior Waters of the Reservation, Boundary Waters, and North Half Waters (see definitions in Part V) year-round unless specifically prohibited under the North Half Limits in Part III of this booklet or the Special Regulations in Part IV of this booklet.
4. Except as provided in the North Half Limits in Part III of this booklet and the Special Regulations in Part IV, Members fishing on Interior Waters of the Reservation, Boundary Waters, and North Half Waters are not subject to daily catch, length, or possession limits.
5. For the purpose of determining whether a fish complies with minimum or maximum length limits, the length of the fish shall be measured from the fish's snout to the tip of the tail, with the exception of White Sturgeon that shall be measured from the tip of the fish's snout to the fork of the tail. See Figures 3 and 4 in Part VI for diagrams.
6. It is unlawful for any Member to fish on any Reservation Water, Boundary Water, or North Half Water during any period in which such water is designed as "closed" to Member fishing under the North Half Limits in Part III or the Special Regulations in Part IV of this booklet.
7. A CCT membership card is considered an acceptable permit for transporting fish off the Reservation.
8. It is unlawful for any Member to sell or barter the edible portion of any game fish for personal gain.
9. It is unlawful for any Member to permit the edible portion of any game or food fish to go to waste needlessly after taking possession of the game or food fish.
10. It is unlawful for any Member to take fish in excess of the daily catch and/or possession limit.
11. It is unlawful for any Member to engage in fishing practices that rely on use of chemicals, explosives, or poisons that may kill or injure fish.
12. It is unlawful for any Member to use a gill net to take fish unless specifically authorized by these regulations or the Director of the CCT Fish and Wildlife Department.

13. It is unlawful for any Member to destroy, tear down, shoot at, deface or erase any printed matter, signs, buoys, or creel census stations placed or posted to assist in the enforcement of tribal fishing regulations.
14. It is unlawful for any Member to destroy, deface, shoot at, move, or tie a boat to any artificial habitat structure or any gear (including buoys) placed for enhancement, protection, monitoring, or research of fish populations or habitat.
15. It is unlawful for any Member to resist or obstruct any Colville Law Enforcement Officer in the discharge of duty while enforcing tribal regulations pertaining to fishing.
16. It is unlawful for any Member to throw, drop, or leave any discharged objects, garbage debris, or waste upon any of the properties subject to the jurisdiction of CCT except into a litter or garbage receptacle or container installed for the purpose.
17. It is unlawful for any Member to plant any fish, fish fry, spawn, aquatic plant, seed, or animal in any waters within the Colville Reservation or North Half without authorization from the Director of the CCT Fish and Wildlife Department.
18. It is unlawful for any Member to fish for or retain Bull Trout unless specifically authorized by these regulations or the Director of CCT Fish and Wildlife Department.
19. It is unlawful for any Member to refuse to provide authorized CCT Fish and Wildlife Personnel with fish harvest information upon request.
20. It is unlawful for any Member to sell fish taken for subsistence or ceremonial purposes except that salmon taken for subsistence purposes may be sold to another tribal member when the purchaser intends to use the salmon for personal consumption, or the consumption of his or her immediate family. Unlawful sale of game or fish is illegal regardless of whether the game or fish was taken from the Reservation or off the Reservation.
21. When fishing on lands that are marked as private property, all Members shall get permission from the owner of the subject land. Members fishing on

private lands shall be courteous and respectful of property rights so as to prevent the closing of additional private lands to fishing.

22. Members may use live fish that currently exist in the system as game fish bait. However, it is unlawful to transport live fish between water bodies because the spread of non-native species, such as Brook Trout and Golden Shiner, is a threat to native fish.
23. **Use of Gaff, Club, or Dipnet:** Members may use a gaff, club, or dipnet to assist landing a legal fish taken with legal gear, except that it is unlawful to gaff sturgeon anywhere or to gaff steelhead on waters where “wild steelhead release” is required.
24. **Use of Livewells:** Members may catch, retain, and release bass and walleye from a livewell up to the daily possession limit. Transport of live fish outside the waterbody where fish were caught is prohibited.
25. **Catch and Release:** Members fishing for trout with bait shall count all trout of legal length towards the daily limit, regardless of whether those trout are kept or released.

PART III—NORTH HALF GENERAL LIMITS

In addition to the General Regulations in Part II of this booklet, the following General Limits shall apply to Member fishing on North Half Waters (see definition in Part V):

1. **North Half Fishing Season on Lakes, Ponds, and Reservoirs:** Except as provided for in the Special Regulations, North Half lakes, ponds, and reservoirs are open to resident game fishing by Members year-round.
2. **North Half Fishing Season on Rivers and Streams (including Beaver Ponds):** Except as provided for in the Special Regulations, North Half rivers and streams are only open to resident game fishing by Members the Saturday before Memorial Day through October 31.
3. **North Half Limits:** Members are not subject to daily catch, length, or possession limits on North Half waters unless modified for individual waters or portions of waters in the Special Regulations (see Part IV).
4. **Hook and Line Fishing:** Members fishing on any North Half Water may only engage in hook and line fishing. Members may use barbed or barbless hooks (single, double, or triple hooks are permitted), but may not use more than one line with up to and including three hooks per angler (but see Multiple Pole Fishing below). Members fishing on any North Half Water must maintain immediate control of their fishing gear and must not leave their fishing gear unattended.
5. **Multiple Pole Fishing:** Members fishing on lakes, reservoirs, and ponds within the North Half may fish with more than one pole simultaneously except where two or more pole fishing is prohibited under the Special Regulations. Multiple pole fishing is not permitted on streams and rivers (including beaver ponds) in the North Half.

PART IV—SPECIAL REGULATIONS

All Members who fish on Interior Waters of the Reservation, Boundary Waters, or North Half Waters must comply with the General Regulations in Part II and the North Half General Limits in Part III of this pamphlet as modified by any applicable Special Regulations provided in Table 2.

Table 2. Special Regulations

| Fishing Location | Special Rules and Exceptions |
|---|--|
| <p>Columbia River above Grand Coulee Dam (excluding the inundated and free-flowing reaches of the Sanpoil River—see separate special rules) (Boundary Water)</p> | <p>Sturgeon Season: Open year round, except closed between the China Bend Boat Ramp and The US/Canada Border from June 1 through July 31.</p> <p>Sturgeon Harvest Restrictions: White Sturgeon between 38 and 63 inches fork length (measured from tip of snout to fork in tail – see Figure 4 on page 25) may be retained. No daily catch or possession limits.</p> <p>Sturgeon Gear: Recommend barbless hook size of 8/0 or less and of circle type with offset point to prevent hooking of wild oversize fish.</p> <p>Setlines allowed. Must be secured properly (tied to shore or adequate size – 30 lb – anchors on each end) and marked with buoys on each end that possess the fisher’s contact information. Must be checked daily. Recommend setlines no longer than 100 feet possessing no more than 5 hooks.</p> <p>Sturgeon PIT tags: Most White Sturgeon have a PIT tag within the muscle along their backs on the left side (see Figure 4 on page 25). These tags are 1/2 inch long and can be a choking hazard and should not be consumed. Confirmed tag removal is strongly encouraged before consuming White Sturgeon. Please contact a CCT Fish and Wildlife office if you would like assistance with PIT tag removal or to return a tag.</p> <p>Sturgeon Health Warning:</p> <ul style="list-style-type: none"> • Children and childbearing adults (those pregnant, planning to be pregnant, or nursing) should eat no more than 9 servings (8 ounces/serving) per month of sturgeon less than 54 inches fork length. • Children and childbearing adults should eat no more than 6 servings (8 ounces/serving) per month of sturgeon between 54 and 63 inches fork length. • Non-childbearing adults can safely eat 3 times the amounts provided above. • If you eat your full meal limit of sturgeon within a month, you should not eat any other fish with similar health warnings within that month. |

| Fishing Location | Special Rules and Exceptions |
|--|---|
| Columbia River from Chief Joseph Dam to Grand Coulee Dam (“Rufus Woods Lake”) (Boundary Water) | Sturgeon: Closed to sturgeon fishing at all times. |
| Crawfish Lake (Boundary Water) | The use of internal combustion engines is prohibited. |
| Ell Lake (North Half) | The use of internal combustion engines is prohibited. |
| Kettle River (from Barstow Bridge upstream) (North Half) | Sturgeon: Closed to sturgeon fishing at all times. |
| Kettle River (inundated reach, upstream to Barstow Bridge) (North Half) | <p>Sturgeon Season: Open year-round.</p> <p>Sturgeon Harvest Restrictions: White Sturgeon between 38 and 63 inches fork length (measured from tip of snout to fork in tail – see Figure 4 on page 25) may be retained. No daily catch or possession limits.</p> <p>Sturgeon Gear: Recommend barbless hook size of 8/0 or less and of circle type with offset point to prevent hooking of wild oversize fish.</p> <p>Setlines allowed. Must be secured properly (tied to shore or adequate size – 30 lb – anchors on each end) and marked with buoys on each end that possess the fisher’s contact information. Must be checked daily. Recommend setlines no longer than 100 feet possessing no more than 5 hooks.</p> <p>Sturgeon PIT tags: Most White Sturgeon have a PIT tag within the muscle along their backs on the left side (see Figure 4 on page 25). These tags are 1/2 inch long and can be a choking hazard and should not be consumed. Confirmed tag removal is strongly encouraged before consuming White Sturgeon. Please contact a CCT Fish and Wildlife office if you would like assistance with PIT tag removal or to return a tag.</p> <p>Sturgeon Health Warning:</p> <ul style="list-style-type: none"> • Children and childbearing adults (those pregnant, planning to be pregnant, or nursing) should eat no more than 9 servings (8 ounces/serving) per month of sturgeon less than 54 inches fork length. • Children and childbearing adults should eat no more than 6 servings (8 ounces/serving) per month of sturgeon between 54 and 63 inches fork length. • Non-childbearing adults can safely eat 3 times the amounts provided above. • If you eat your full meal limit of sturgeon within a month, you should not eat any other fish with similar health warnings within that month. |
| Lake Roosevelt | See rules for “Columbia River above Grand Coulee Dam (excluding the inundated and free-flowing reaches of the Kettle and Sanpoil rivers—see separate special rules)” |

| Fishing Location | Special Rules and Exceptions |
|--|--|
| Lake Rufus Woods | See rules for “Columbia River from Chief Joseph Dam to Grand Coulee Dam” |
| No Name Creek (Interior Water) | Trout: Closed to fishing April 1 through June 30. |
| Okanogan River (Boundary Water) | <p>Rainbow Trout: Release all trout.</p> <p>Steelhead: Closed to fishing unless specifically authorized by the CCT Fish and Wildlife Director.</p> <p>All Other Game Fish: Year-round. No minimum length, daily catch, or possession limits.</p> |
| Omak Creek (Interior Water) | <p>All species: Closed to Fishing March 1 to June 1 for the protection of ESA list Steelhead.</p> <p>Rainbow Trout: Only fish between 12 inches and 20 inches in length may be retained. Special gear restrictions apply: single barbless hook and artificial flies only.</p> <p>Chinook and Steelhead: Closed to fishing unless specifically authorized by the CCT Fish and Wildlife Director.</p> <p>All Other Game Fish: No minimum length, daily catch, or possession limits.</p> |
| Omak Lake (Interior Water) | <p>Access Restrictions: There are no access restrictions.</p> <p>Trout: Daily limit of 3 fish with no more than 1 over 20 inches.</p> <p>Special Season: From April 1 to May 31, only catch-and-release fishing is permitted on Omak Lake.</p> |

| Fishing Location | Special Rules and Exceptions |
|--|---|
| <p>Sanpoil River (inundated reach) (Interior Water)</p> <p>See Part VI Figure 2.</p> | <p>Limits: White Sturgeon. All other game fish, general rules apply.</p> <p>Sturgeon Season: Open year-round.</p> <p>Sturgeon Harvest Restrictions: White Sturgeon between 38 and 63 inches fork length (measured from tip of snout to fork in tail – see Figure 4 on page 25) may be retained. No daily catch or possession limits.</p> <p>Sturgeon Gear: Recommend barbless hook size of 8/0 or less and of circle type with offset point to prevent hooking of wild oversize fish.</p> <p>Setlines allowed. Must be secured properly (tied to shore or adequate size – 30 lb – anchors on each end) and marked with buoys on each end that possess the fisher’s contact information. Must be checked daily. Recommend setlines no longer than 100 feet possessing no more than 5 hooks.</p> <p>Sturgeon PIT tags: Most White Sturgeon have a PIT tag within the muscle along their backs on the left side (see Figure 4 on page 25). These tags are 1/2 inch long and can be a choking hazard and should not be consumed. Confirmed tag removal is strongly encouraged before consuming White Sturgeon. Please contact a CCT Fish and Wildlife office if you would like assistance with PIT tag removal or to return a tag.</p> <p>Sturgeon Health Warning:</p> <ul style="list-style-type: none"> • Children and childbearing adults (those pregnant, planning to be pregnant, or nursing) should eat no more than 9 servings (8 ounces/serving) per month of sturgeon less than 54 inches fork length. • Children and childbearing adults should eat no more than 6 servings (8 ounces/serving) per month of sturgeon between 54 and 63 inches fork length. • Non-childbearing adults can safely eat 3 times the amounts provided above. • If you eat your full meal limit of sturgeon within a month, you should not eat any other fish with similar health warnings within that month. |
| <p>Sanpoil River (free-flowing reach) (Interior Water)</p> <p>See Part VI Figure 2</p> | <p>Kokanee: Between August 1 and November 15 closed to fishing.</p> <p>All Other Game Fish: No minimum length, daily catch, or possession limits.</p> |
| <p>Sanpoil River Tributaries (North and South Nanamkin, Iron Creek, Bridge Creek, Louie Creek, Copper Creek, Thirty Mile Creek, and West Fork Sanpoil) (Interior Water)</p> | <p>Trout: Closed to fishing from January 1 to May 31.</p> |

| Fishing Location | Special Rules and Exceptions |
|---|--|
| Sherman Creek (North Half) | Closed Waters: The area from the hatchery boat dock to 400 feet upstream of hatchery water diversion dam is closed to fishing at all times. |
| Washburn Pond (Boundary Water) | The use of internal combustion engines is prohibited. Gear Allowance: It is lawful to take fish on Washburn Pond by angling, hand, hand dipnet, tangle net, gill net, gaff, snag, spear, or trap. Use of the above methods shall be limited to not more than two gear types, separately or in combination. |
| Wells Reservoir (Boundary Water) | Trout: From July 1 to August 15 th only fish over 12 inches in length may be retained. Sturgeon: Closed to sturgeon fishing at all times. |

PART V—DEFINITIONS

The following definitions apply to the fishing regulations contained in this booklet:

1. **“Bait”** means a food or other substitute used as a lure for fishing.
2. **“Boundary Waters”** means (a) the Columbia River where it forms the southern and eastern boundary of the Reservation, (b) the Okanogan River where it forms the western boundary of the Reservation, (c) the Wells Dam Reservoir, (d) Washburn Island Pond, and (e) Crawfish Lake. The term “Boundary Waters” does not include the free-flowing or inundated portions of the Sanpoil River.
3. **“Business Council”** means the elected governing body of the Confederated Tribes of the Colville Reservation as prescribed in Article II of the Colville Constitution.
4. **“Catch and release”** means a method of fishing where no fish may be retained by the angler. Requires selective gear and only lures or flies with a single barbless hook may be used. Bait may not be used in designated “Catch and Release” areas.
5. **“Code”** means Chapter 4-1 of the Colville Tribal Law and Order Code.
6. **“Colville Law Enforcement Officer”** means any person employed by CCT who has authority to enforce the Colville Tribal Law and Order Code and regulations implemented pursuant to the Colville Tribal Law and Order Code.
7. **“Daily catch limit”** means the maximum number of fish that may be taken, caught, killed, or possessed by any person as specified and fixed by the Code or regulations of the Business Council. The daily catch limit may be designated for any particular period of time, or may limit catch by length, sex or species.
8. **“Fly”** means a lure on which thread, feathers, hackle or yarn cover at least half of the hook.
9. **“Game fish”** means Rainbow Trout, Brook Trout, Westslope Cutthroat Trout, Lahontan Cutthroat Trout, Brown Trout, Bull Trout, Whitefish

(Mountain and Lake), Kokanee, White Sturgeon, Largemouth Bass, Smallmouth Bass, Yellow Perch, Walleye, Bluegill, Pumpkinseed, Black Crappie, Burbot, and any other fish designated as a game fish by the Business Council.

10. **“Interior Waters of the Reservation”** means all rivers, lakes, ponds, streams, sloughs, canals, irrigation canals, and diversions naturally occurring or human made that are located wholly within the boundary of the Reservation, including the Sanpoil River (inundated reach).
11. **“Member”** means any person who is enrolled in the Confederated Tribes of the Colville Reservation.
12. **“North Half”** means the lands that were removed from the Colville Reservation pursuant to an 1891 Agreement between CCT and the United States (see Part VI Figure 1). Pursuant to the 1891 Agreement, CCT retains hunting and fishing rights on the North Half.
13. **“North Half Waters”** means all rivers, lakes, ponds, streams, sloughs, canals, irrigation canals, and diversions naturally occurring or human made that are located wholly or partially within the North Half (see Part VI Figure 1).
14. **“Open season”** means the period of time specified by Business Council regulation or the Code when it is lawful to fish.
15. **“Open waters”** means Reservation surface waters where it is lawful to fish as specified by Business Council regulation or the Code.
16. **“Possession limit”** means the maximum amount of live or dead fish allowed to be retained at any one time and includes preserved or processed fish.
17. **“Regulation”** means any rule, regulation, resolution or ordinance promulgated by the Business Council pursuant to the Code.
18. **“Reservation”** means the Colville Indian Reservation.
19. **“Reservation shoreline”** means the line between waters of the Reservation and adjacent land within the Reservation. A reservation shoreline may change during the fishing season as a result of reservoir operations, natural

runoff, irrigation demands, etc. The Grand Coulee Dam structure is not considered a Reservation shoreline.

20. **“Resident fish”** means fish species which do not migrate to the ocean.
21. **“Sanpoil River (inundated reach)”** means the portion of the Sanpoil River between the designated Tribal Fishing Boundary and the Sanpoil River (free-flowing reach). The Tribal Fishing Boundary is designated by buoys and depicted as Boundary A in Part VI Figure 2 of this pamphlet.
22. **“Sanpoil River (free-flowing reach)”** means the free-flowing reach of the Sanpoil River, which is the portion of the Sanpoil River north of Boundary C as depicted in Part VI Figure 2 of this pamphlet.

PART VI—MAPS AND DIAGRAMS

Figure 1: Map of Colville Reservation and North Half

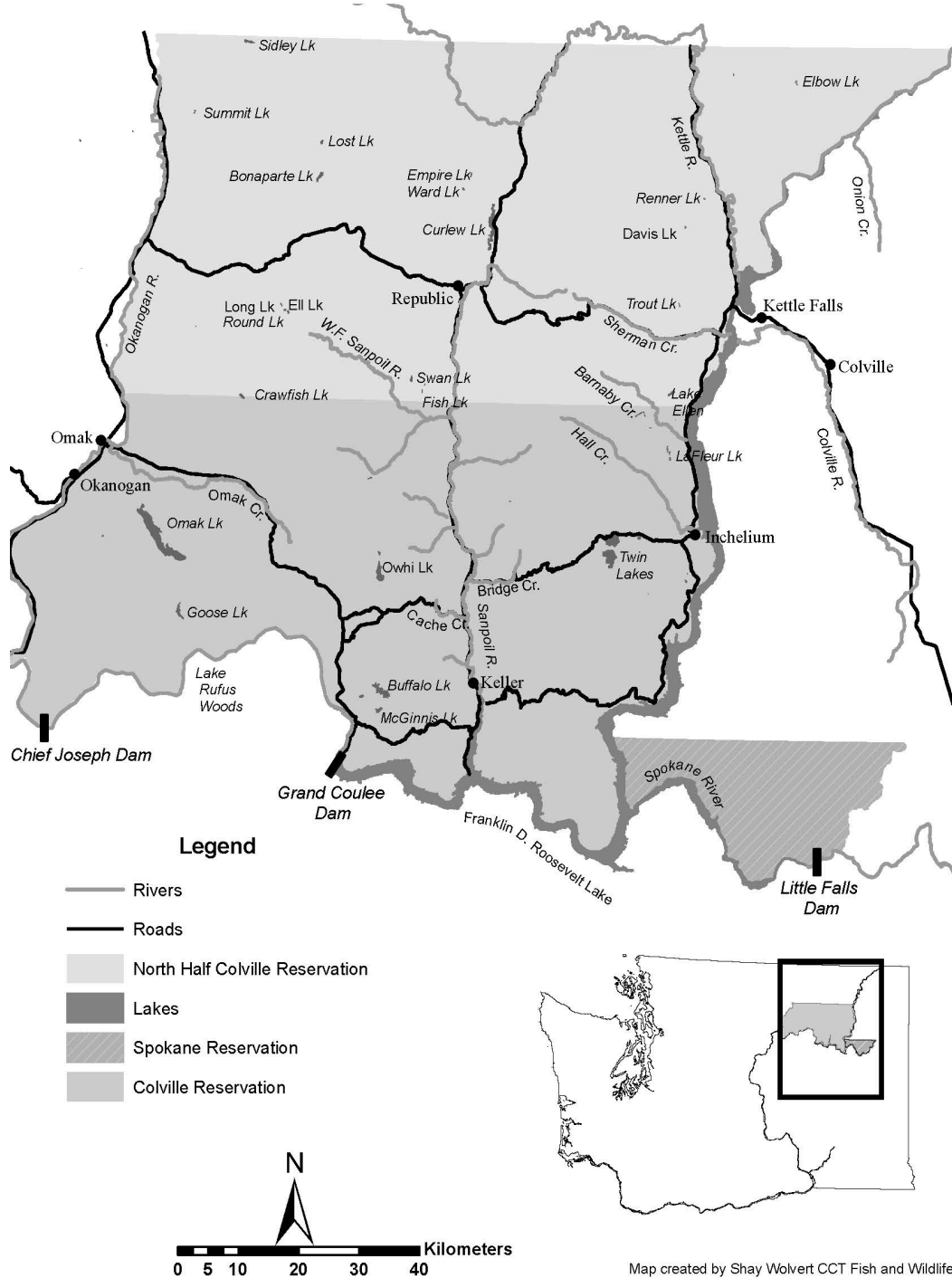


Figure 2: Map of Sanpoil River (inundated reach).

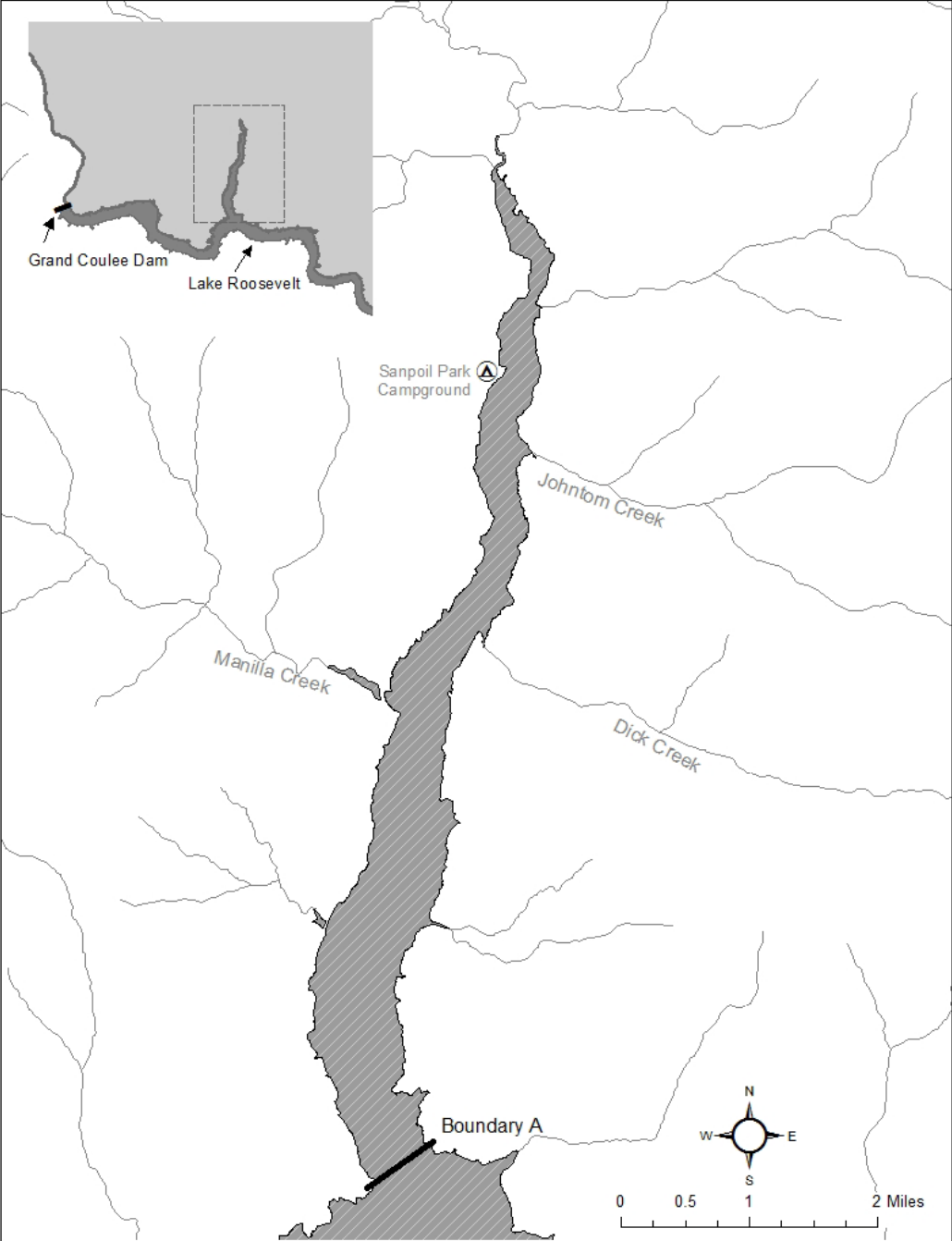


Figure 3: Fish length diagram

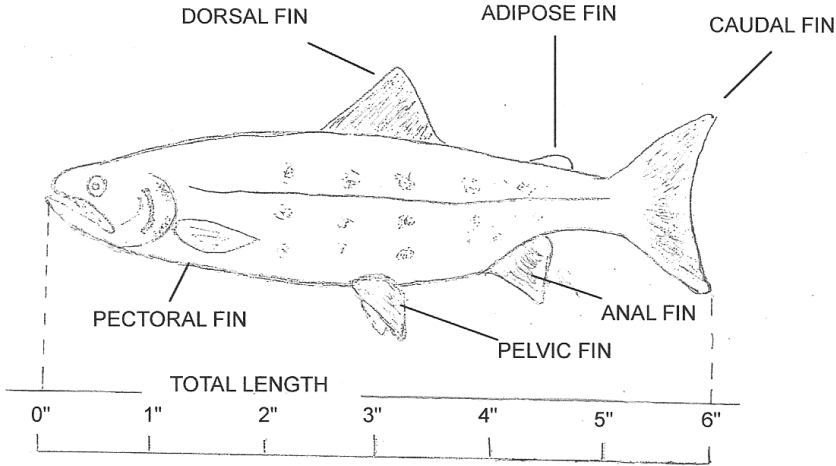
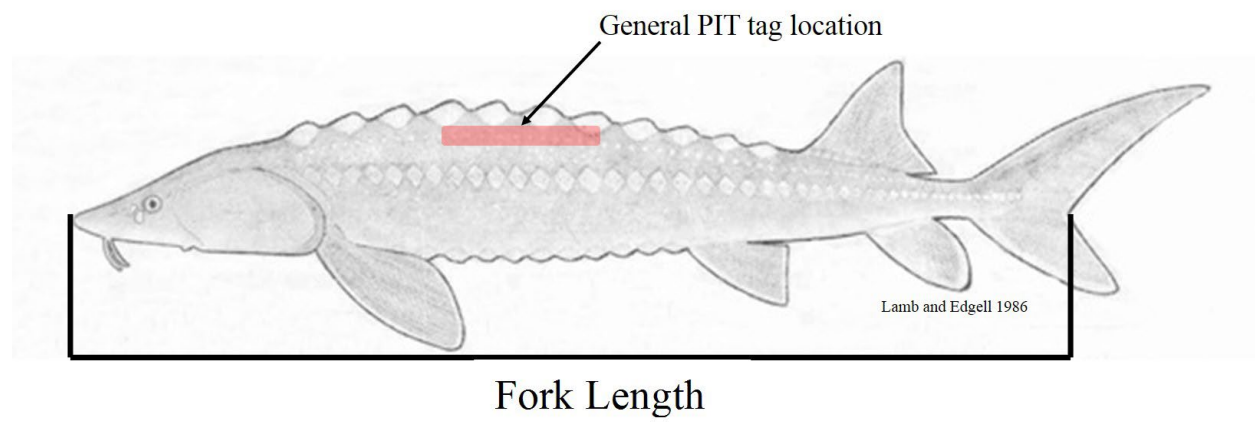


Figure 4. White Sturgeon measurement guide for fork length (tip of snout to fork in tail) and the general location where PIT tags can be found (red box).



Protect our waters from Invasive Species!

Before entering & when leaving waterbodies:

CLEAN: All equipment should be cleaned of aquatic plants, algae and mud. This includes boat hulls and engines, trailers, shoes, waders, life vests, and other gear.

DRAIN: Motor, bilge, livewell and other water containing devices before leaving water access.

DRY: Everything for at least 5 days or wipe with a towel before use.

Do NOT Transport Live Fish: It is ILLEGAL to transport or release any live fish into reservation waters. Retained fish must be killed before leaving each waterbody.

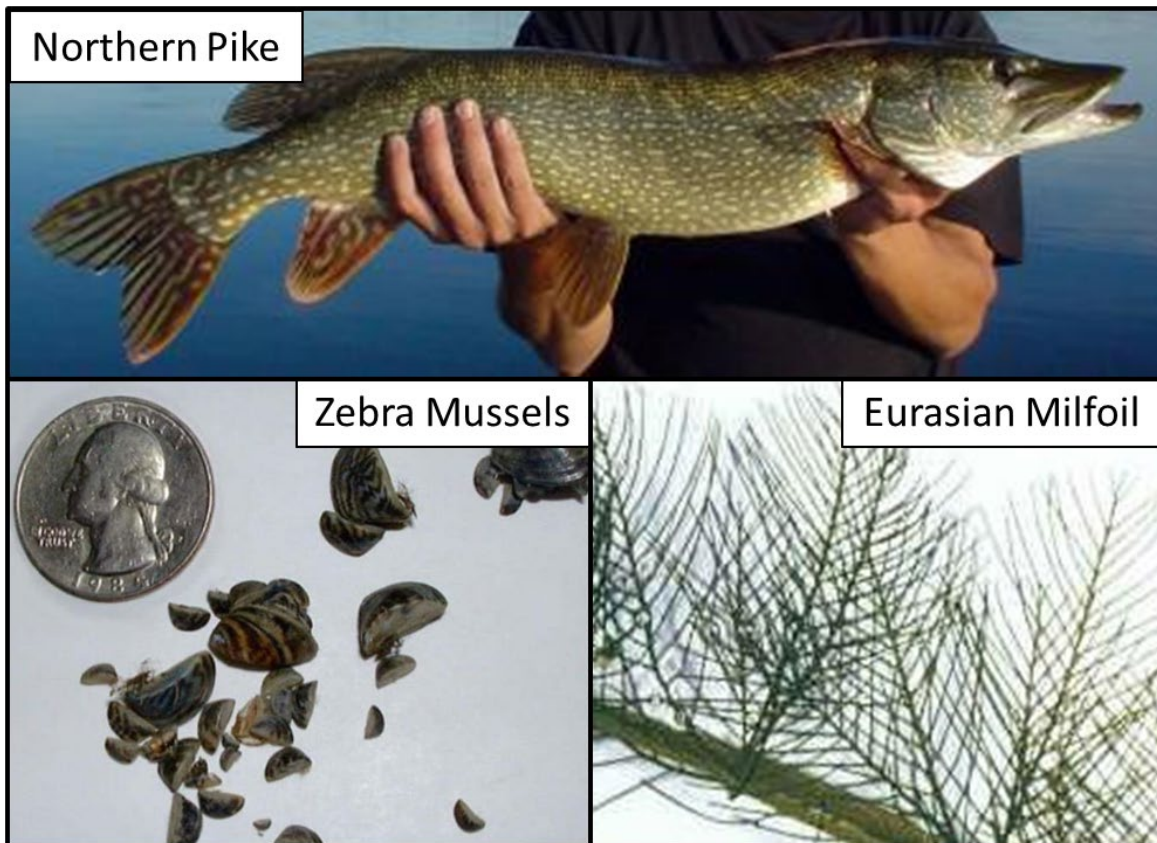


Figure 7. Invasive species threatening CCT Reservation waters. Northern Pike (top), Zebra Mussels (bottom left), and Eurasian Milfoil (bottom right). Note Eurasian milfoil has 12-21 leaflets per leaf and is limp when held out of water and native Northern Milfoil has 5-10 leaflets and is rigid out of water.

